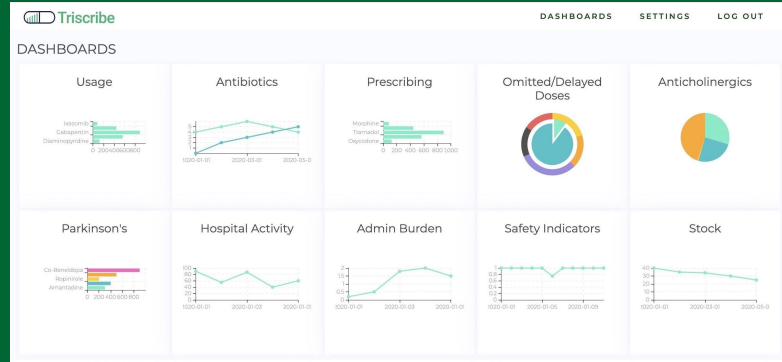




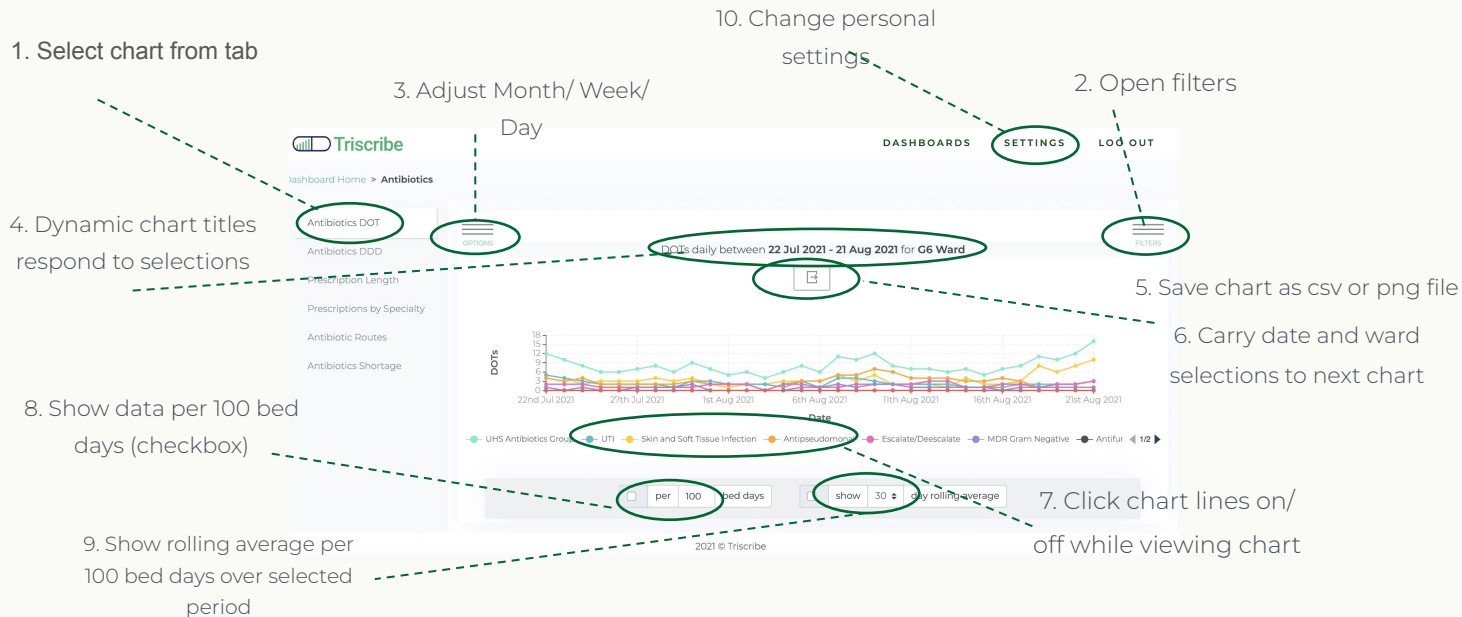
**Triscribe**  
Intelligence in Prescribing

# Product Guide May 2022

Using existing data to make  
life easier for people



## Chart Guide – 05/22



The screenshot shows the Triscribe dashboard interface with the following annotations:

- Select chart from tab**: Points to the 'Antibiotics DOT' tab in the left sidebar.
- Open filters**: Points to the 'FILTERS' button in the top right corner.
- Adjust Month/ Week/ Day**: Points to the 'Day' dropdown menu in the top center.
- Dynamic chart titles respond to selections**: Points to the chart title 'DOTs daily between 22 Jul 2021 - 21 Aug 2021 for G6 Ward'.
- Save chart as csv or png file**: Points to the download icon (a square with a downward arrow) next to the chart title.
- Carry date and ward selections to next chart**: Points to the date range '22 Jul 2021 - 21 Aug 2021' and the ward 'G6 Ward' in the chart title.
- Click chart lines on/off while viewing chart**: Points to the legend at the bottom of the chart, specifically to the 'UHS Antibiotics Group' line.
- Show data per 100 bed days (checkbox)**: Points to the 'per 100 bed days' checkbox in the bottom right of the chart area.
- Show rolling average per 100 bed days over selected period**: Points to the 'show 30 day rolling average' checkbox in the bottom right of the chart area.
- Change personal settings**: Points to the 'SETTINGS' button in the top right corner.

# League Table Guide – 05/22

1. Select chart from tab

7. Change personal settings

2. Open filters

3. List of ward ranked in order

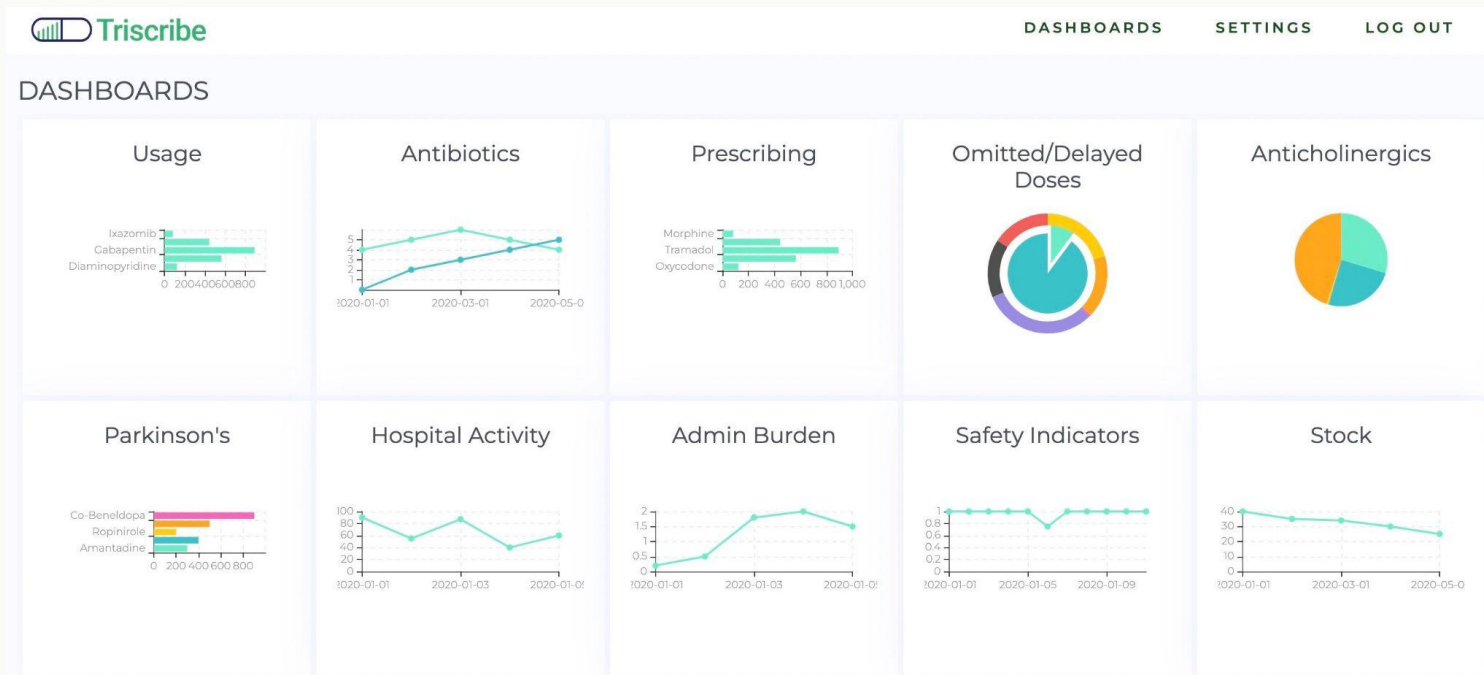


4. Dynamic chart titles respond to selections

5. Arrow to order by high/low or low/high

6. Click to show breakdown by drug or by administrator

# Dashboard – 05/22



## Usage – 05/22



### Overview

A simple view of usage for any drug. Mainly used for checking and admin purposes. Now includes predictive chart based on prescriptions for any given ward.

### Charts

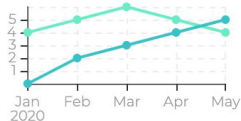
- Drug Usage (Heat Map)
- Administration Counts
- Compare Ward Usage (Total)
- Compare Ward Usage (Per Drug)
- Ward Drug Usage Table
- Usage Prediction

### Filters

- Dates; Drugs (by name and create custom groups); Wards (by name and by care group or custom group)

# Antibiotics – 05/22

## Antibiotics



### Overview

First and most advanced set of charts with more to come. Developed as part of the [ADAPTA](#) project.

### Charts

- Administrations by Days of Therapy – DOTs
- Administrations by defined daily dose (DDDs) – recently upgraded
- Prescription length in days
- Prescriptions by specialty
- Administrations by route
- Antibiotics shortage

### Filters

- Varies slightly by chart but includes the following:
- Dates (inc ranges); Drugs (by name, standard groups, custom groups); Wards (by name, care group, custom group); Age, Sex, Route; Consultant specialty

# Prescribing – 05/22



## Charts

- Opioid Prescribing statistics
- NEW - Very interested in suggested new analyses to include in this area.

## Filters

- Dates (inc ranges); Wards (by name, custom group)
- Opioid drug group preset by hospital

## Overview

New chart introduced in 2022. Aim is to provide help with Opioid deprescribing.

## Omitted/ Delayed Doses – 05/22

### Omitted/Delayed Doses



#### Overview

Major focus for prescribing safety. Daily analytics for ward managers. Trends and patterns across wards and for specific omission reasons used by safety leads. Delayed/ Early doses information added in 2022.

#### Charts

- Omitted Doses League Table
- Early v Late v On-Time League Table
- Omitted Doses Overview
- Ward View (Heat Map)
- Omitted Reasons Ward View
- Omitted Reasons Ward Compare

#### Filters

- Dates; Wards (by name, care group, custom group); Reasons
- Date; Wards (by name, care group, custom group)
- Hospital and NHS reasons; Dates; Wards (by name, care group, custom group);
- Dates; Select specific ward; Reasons
- Dates; Drugs (by name, custom groups); Select specific ward; Reasons
- Dates; Select specific wards to compare; Reasons; Age



## Anticholinergics – 05/22



### Overview

Less developed. Analyses anticholinergic burden by score to support falls prevention teams.

### Charts

- Anticholinergics Overview (Heat Map)
- Anticholinergics Breakdown
- Anticholinergics Patients

### Filters

- Dates; Drugs (by name, custom group); Anticholinergic score; Wards (by name, custom group); Age

## Parkinson's – 05/22



### Charts

- Parkinson's Drug Administrations
- Parkinson's Delayed Administration Counts
- Parkinson's Delayed Administrations Time Series

### Filters

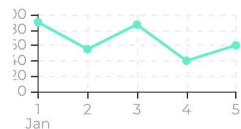
- Dates; Drugs (by name, Parkinson's group, custom group); Wards (by name, Care group)
- Dates; Drugs (by name, Parkinson's group, custom group); Wards (by name, Care group)
- Dates; Drugs (by name, Parkinson's group, custom group); Wards (by name, Care group)

### Overview

Recently added new analytics. Being refined with a hospital Parkinson's team.

# Hospital Activity – 05/22

## Hospital Activity



### Charts

- Admissions
- Bed days

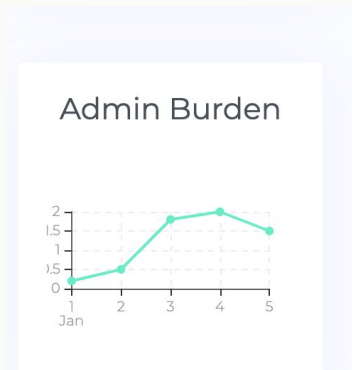
### Filters

- Dates; Wards (by name, Care group, Custom group)
- Dates; Wards (by name, Care group, Custom group)

### Overview

Chart introduced because hospital staff face a 6 week delay to get bed day information. Numbers inferred from EPMA data – needs further development.

## Admin burden – 05/22



### Overview

New for Covid response.  
Short term prediction of  
admin burden. Help ward  
managers deploy scarce  
qualified nursing staff  
each morning.

### Charts

- Overview
- Burden Group Levels
- Burden Group Scores

### Filters

- Dates; Wards (by name, custom list)
- Dates; Wards (by name, custom list) and burden group (eg injectables, oral etc)
- Dates; Wards (by name, custom list) and burden group (eg injectables, oral etc)

## Safety Indicators – 05/22



### Charts

- Safety indicator passes weekly

### Filters

- Dates; Impact indicators

### Overview

First steps in support of SMART Medication Safety programme. Initial indicator is Methotrexate given more than once per week. Many more to follow over coming months.

# Stock – 05/22



## Overview

Under development. Only analytics that combines pharmacy stock and EPMA data. Purpose: forecasting medicines at risk of shortage. Risk scores being tested with pharmacy team.

©Triscribe Ltd 2022

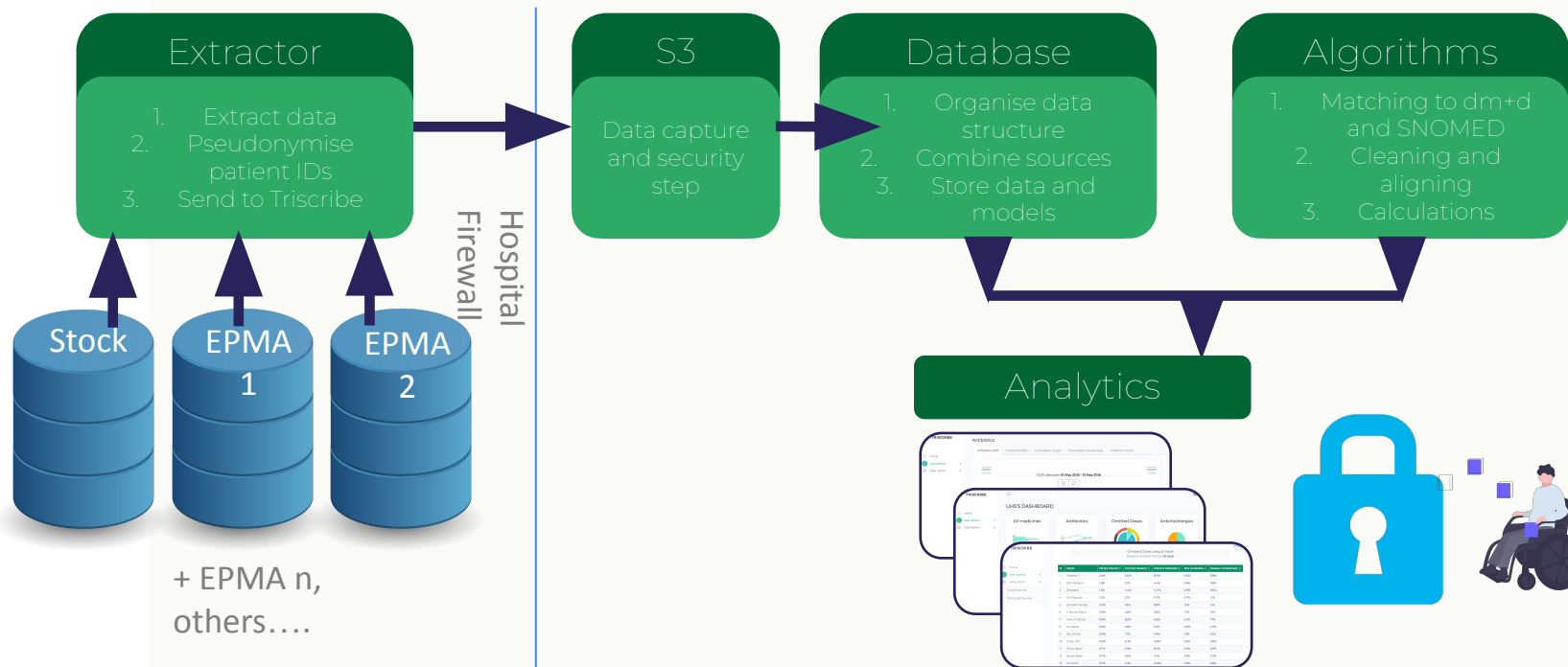
## Charts

- Stock history
- Stock movement

## Filters

- Dates; Drug names (VMP level)
- Dates; Drug names (VMP level); Wards (Name, Care group, custom list)

# How it works - high level technical architecture



Visit *<https://triscribe.net/>*  
And click “What’s in the  
box”

